

Move-in Ready
Opportunity in
This A Class
Office Building

[VIEW SUITE 100](#) 

[VIEW SUITE 300](#) 

FOR LEASE | 165 Commerce Valley Drive West

Incredible opportunity to lease 'plug and play' premises in this Class A office tower. 165 Commerce Valley Drive West at Southcreek Corporate Centre offers the best in building systems and design. Efficient full floor with tremendous natural light and views overlooking Vanhorn Park.

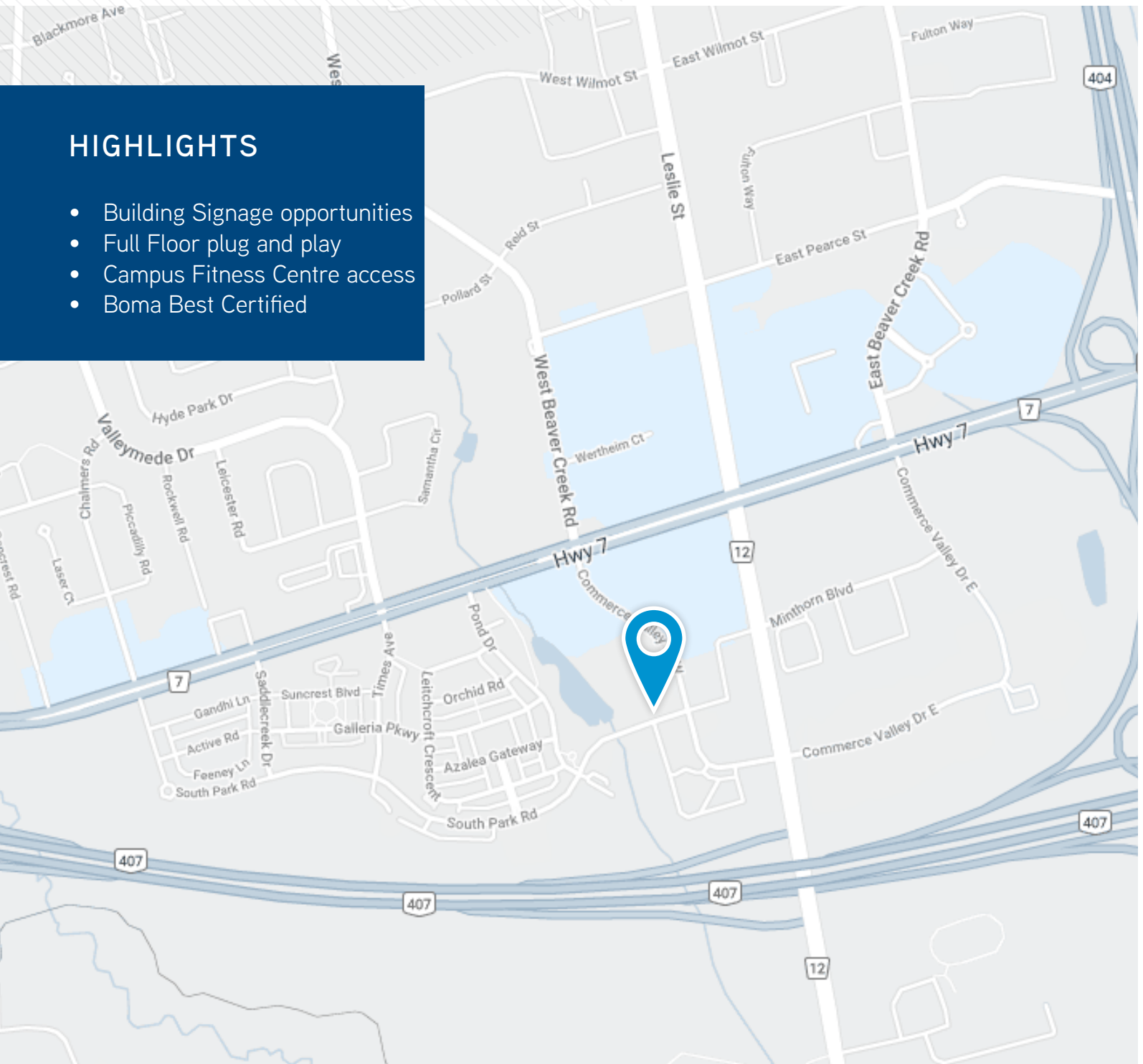
Patrick Cowie
Senior Vice President*
+1 416 791 7223
+1 416 278 7725
patrick.cowie@colliers.com












OPPORTUNITY | Recently renovated office building with demisable floor plates, north facing views, and centrally located in an amenity rich location with a desirable transit and walk score. Potential signage opportunity and ample on-site parking & bike storage available.

HIGHLIGHTS

- Building Signage opportunities
- Full Floor plug and play
- Campus Fitness Centre access
- Boma Best Certified



OFFICE FEATURES

-  3 High Speed Elevators
-  Generous expansive lobby
-  24/7 Security
-  Compartmentalized HVAC VAV on floor system
-  Parking: Surface and Deck at ratio of 4/1,000 SF
-  Typical Floor: 17,100 SF Rentable SF
-  Shipping: Truck level loading dock
-  Current Service Providers: Bell, Rogers, Allstream, Terago
-  On site cafe



WALK SCORE

62



TRANSIT SCORE

42



BIKE SCORE

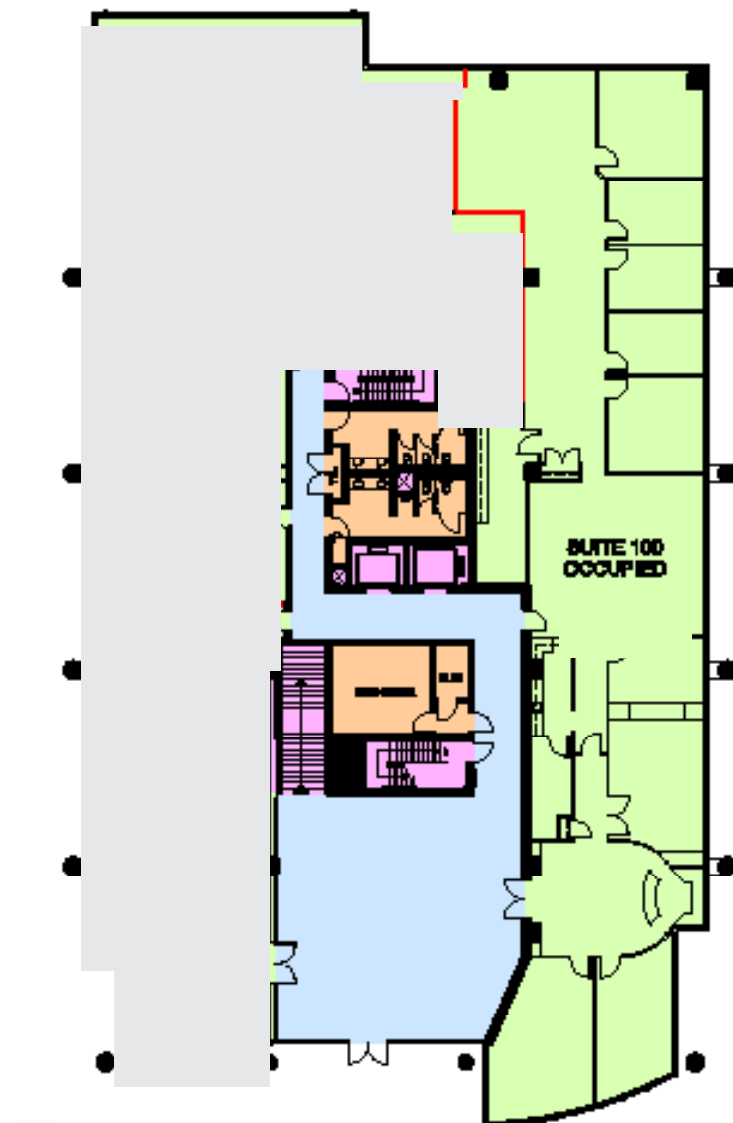
70

AVAILABLE SPACE

SUITE	AREA	COMMENTS
100	5,720 SF	<ul style="list-style-type: none"> Lobby exposure High ceilings
300	17,700 SF	<ul style="list-style-type: none"> Full Floor Move-in condition

Net Rent	\$21.00 PSF
Additional Rent	\$16.02 (2021)
Parking	4/1,000 Free
Term	Open
Available	Immediately





AREA SUMMARY

SUITE No.	USABLE AREA	RENTABLE AREA
100	4,849 S.F.	5,220 S.F.
110	1,774 S.F.	2,062 S.F.
120	4,222 S.F.	4,222 S.F.
TOTAL	10,845 S.F.	11,504 S.F.

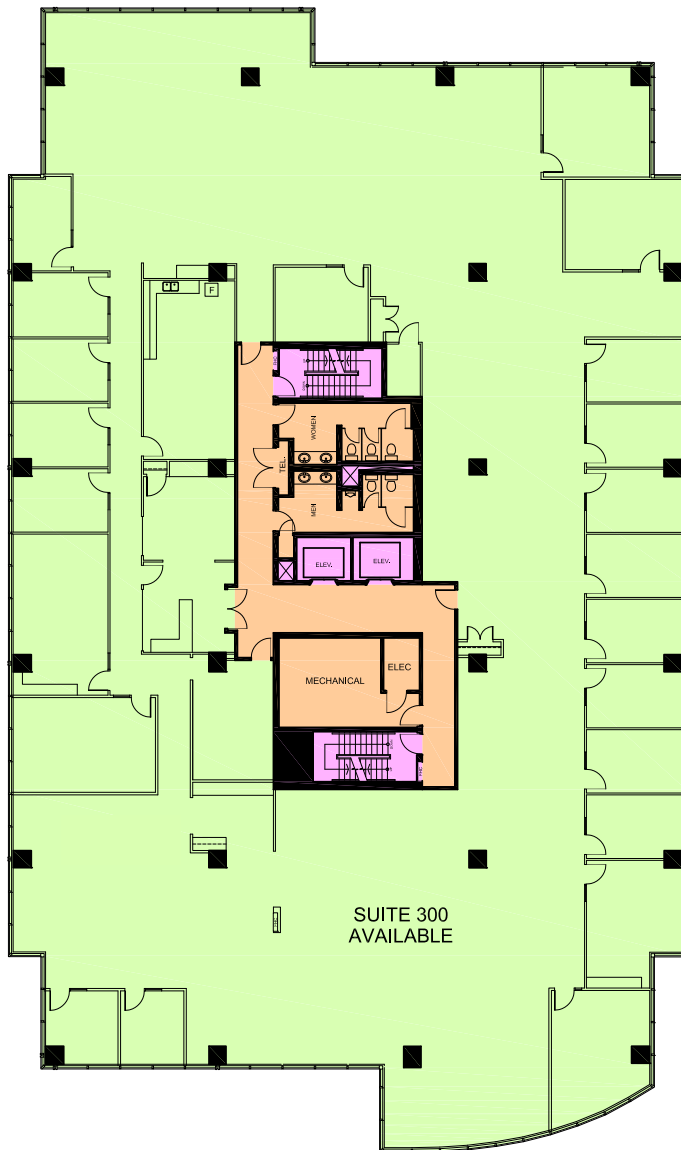
RAU RATIO = 1.1788

ABOVE INFORMATION ESTABLISHED ACCORDING TO ANSI / BOMA 200.1 1996

NORTHAM
REALTY ADVISORS LIMITED

165 Commerce Valley Dr W,
Markham, Ontario
Ground Floor - Area Summary

July 17, 2017 - 165CommerceValley F01_Record © 2017 Space Database Inc. All Rights Reserved



- USABLE AREA
- VERTICAL PENETRATIONS
- FLOOR COMMON AREA

0 10 50 FT.

AREA SUMMARY

SUITE No.	USABLE AREA	RENTABLE AREA
300	14,471 S.F.	17,700 S.F.
TOTAL	14,471 S.F.	17,700 S.F.

R/U RATIO = 1.22320

ABOVE INFORMATION ESTABLISHED ACCORDING
TO ANSI / BOMA Z65.1 1996



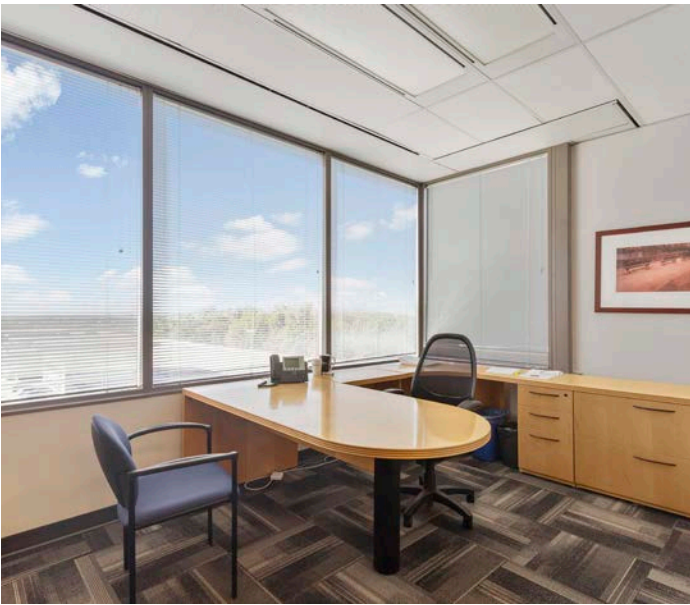
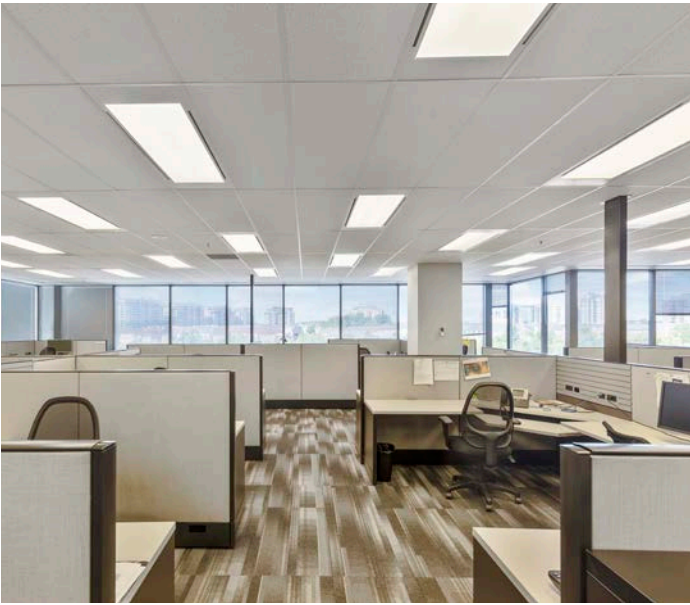
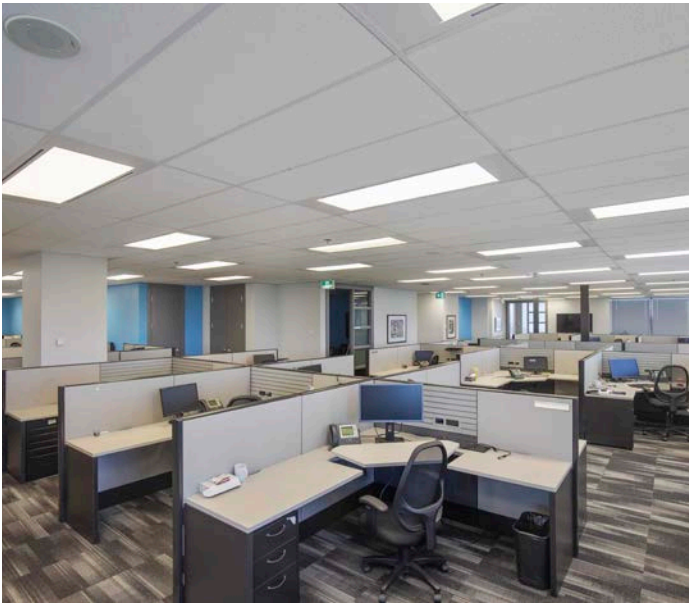
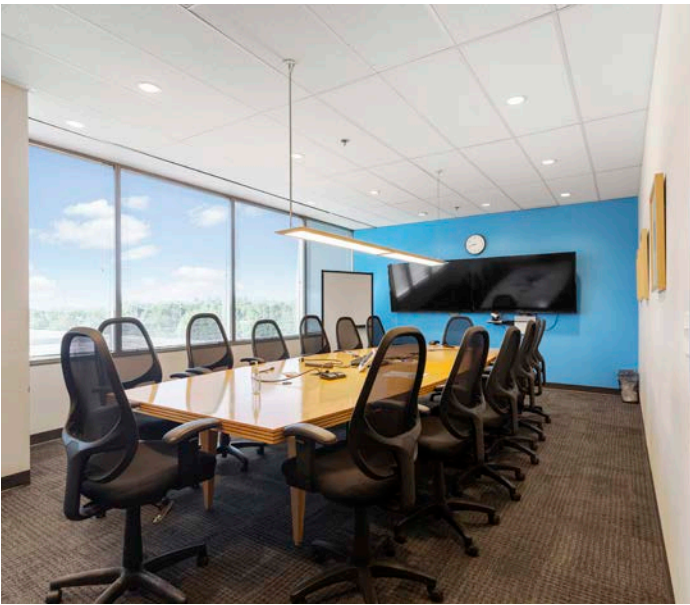
NORTHAM
REALTY ADVISORS LIMITED

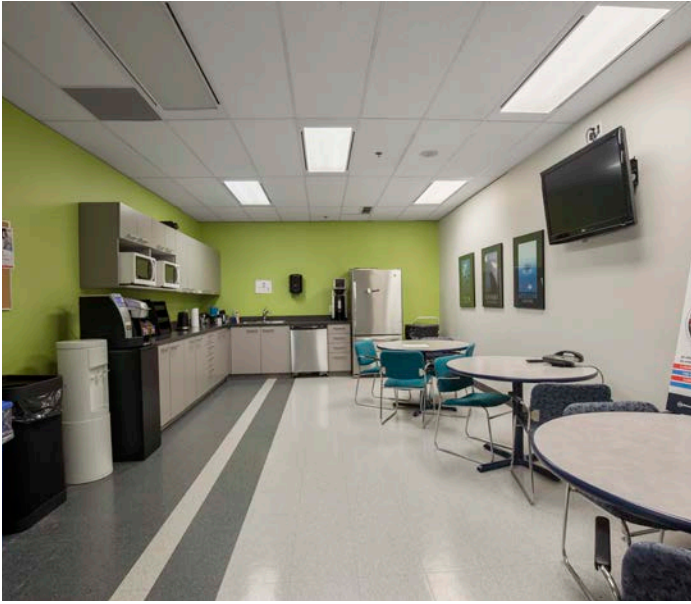
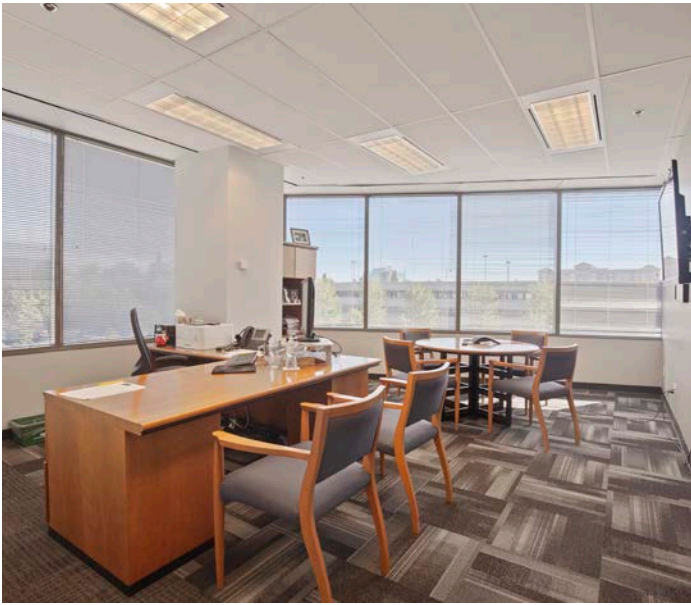
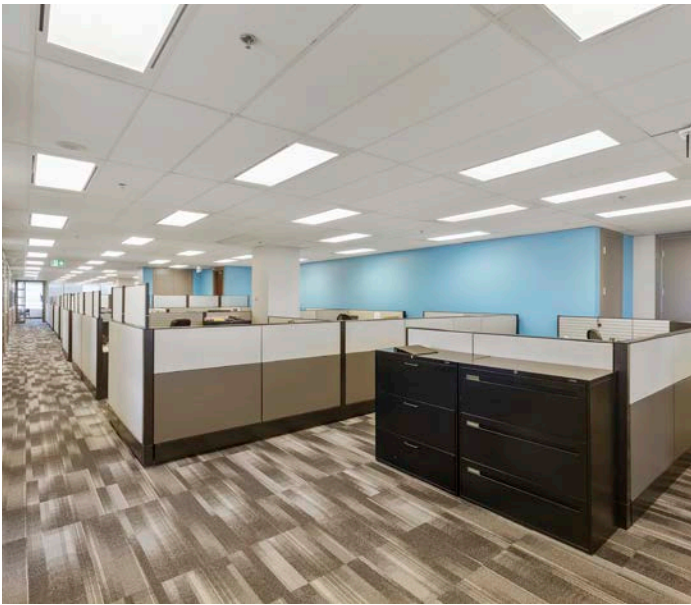
165 Commerce Valley Dr W,
Markham, Ontario
Third Floor - Area Summary

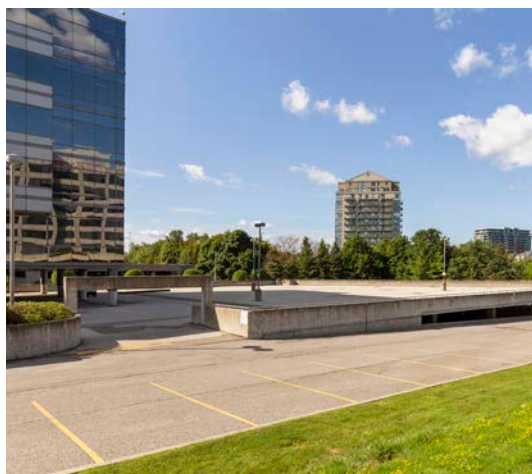
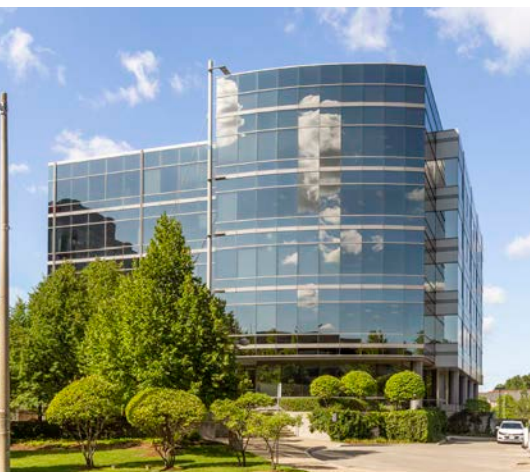
September 29, 2020 - 165CommerceValley F03_Record © 2020 Space Database Inc. All Rights Reserved

[VIEW SUITE 300](#)









[VIEW SUITE 100](#) 

[VIEW SUITE 300](#) 

CONTACT

Patrick Cowie

Senior Vice President*

+1 416 791 7223

+1 416 278 7725

patrick.cowie@colliers.com



COLLIERS INTERNATIONAL

245 Yorkland Boulevard, Suite 200

Toronto, ON, M2J 4W9

416 777 2200

www.collierscanada.com

This document/email has been prepared by Colliers International for advertising and general information only. Colliers International makes no guarantees, representations or warranties of any kind, expressed or implied, regarding the information including, but not limited to, warranties of content, accuracy and reliability. Any interested party should undertake their own inquiries as to the accuracy of the information. Colliers International excludes unequivocally all inferred or implied terms, conditions and warranties arising out of this document and excludes all liability for loss and damages arising there from. This publication is the copyrighted property of Colliers International and /or its licensor(s). © 2021. All rights reserved. This communication is not intended to cause or induce breach of an existing listing agreement. Colliers Macaulay Nicolls Brokerage Inc.